



# *Experience*

Chennai's finest  
community living

 **Kolapakkam**  
Off Vandalur - Kelambakkam Road



📍 Kolapakkam

Residential real estate **project of the year**

**Isha Shubham**



4 successful milestones shaping Perungalathur



21+ years of creating sustainable eco-friendly homes

2.5M+ Sq. Ft. Sold	30+ Successful Projects
3500+ Happy Families	6+ Awards

We proudly introduce the project that defines this year,



Kolapakkam

Premium Apartments at New Perungalathur

Type	Total Apts.
2 BHK + 2T	125
3 BHK + 2T	48
<b>Total</b>	<b>173</b>



### Welcome to a space that's truly yours

Every once in a while, you step into a place that feels right. Welcome to Isha UNI5. Here, light finds you first, then space follows.

Set in Kolapakkam, you feel connected to the city but never consumed by it. With the Vandalur-Kelambakkam link road set to widen soon, life finally feels unhurried.

The whole idea behind UNI5 is balance. **We call it the five promises: Work, Play, Connect, Grow, Relax.** Every UNI5 2 & 3 BHK homes invite you to live with flow, connection, and ease.

**2 & 3 BHK** | **5 Signature Blocks**  
**930-1238 Sq. Ft.** | **173 Timeless Homes**

Block	No. of Floors	Apts. per Floor	Total
A	5	1+5	28
B	5	6	30
C	5	8	40
D	5	8	40
E	5	7	35
<b>Total No. of Apartments</b>			<b>173</b>



📍 Kolapakkam

The moment you step inside,  
you can feel life ease up a little.

# Everything

feels clearer, quieter, and built  
with purpose.





📍 Kolapakkam



# *Experience*

an affluent social life on your terms.  
Calm, when you want it. Community,  
when you need it.



Kolapakkam

# Project Highlights

- Located on a 40-foot-wide road and just 2.9 km from the 150-foot eastern bypass road
- Within a well established community
- Major connectivity to all national highways
- Easy proximity to major schools, colleges, & hospitals
- Just 4.8 km from Kilambakkam bus terminus & 5.5 km from Vandalur railway station
- Pollution-free environment & secured ambience
- Well-connected transport system to all parts of Chennai city



Location Map  
Not to scale



📍 Kolapakkam

### Schools

- Velammal New Gen School .....1.8 km
- Crescent School.....3.9 km
- SSM School ..... 4.5 km
- FIITZEE Global School ..... 5.4 km
- Shri Niketan School ..... 5.4 km
- GKM School ..... 5.5 km
- Zion School ..... 6.8 km
- CG International School ..... 7.4 km
- Shree Bharath Vidhyasaram ..... 8.7 km

### Hospitals

- Tagore ..... 4.5 km
- One Health Super Speciality ..... 5.0 km
- Hindu Mission ..... 8.2 km
- SRM ..... 13 km
- Global Hospital ..... 18 km
- Kamatchi Hospital ..... 21 km

### Colleges

- Annai Velankanni Engg. College ..... 2.1 km
- Balaji Arts & Science College ..... 2.1 km
- Ramanujam Engg. college ..... 2.5 km
- Cresnet University ..... 3.6 km
- Tagore Engg. College ..... 4.0 km
- Tagore Medical & Dental College ..... 4.5 km
- VIT ..... 7.3 km
- Bharath University ..... 9.0 km
- SRM University ..... 13 km
- Chettinadu Medical College ..... 18 km

### IT Companies

- Shriram Gateway IT ..... 6 km
- Zoho ..... 11 km
- MEPZ ..... 12 km
- SIPCOT ..... 19 km
- ELCOT SEZ ..... 19 km



# Vandalur–Kelambakkam road is getting a glow-up to two lanes.

Your promising neighborhood is growing fast, yet remains grounded in peace. Top schools and colleges are just a smooth drive away. Emergencies & essentials, always close.



Kolapakkam

You no longer adapt your life to your home. Instead, your home adapts to you.



Clubhouse



Landscaped Garden



Gym



Yoga Deck



Kids Play Area



EV Charging Provision



Indoor Games



Multipurpose Hall

At the clubhouse, UNI5 just turns into one big family. Quick games, friendly rivalries, and moments that make weekends unforgettable. Strength, stamina, and serenity, all within reach. Your personal wellness at your doorstep, no commute required. A serene yoga deck to connect with mind, body, and yourself.



Kolapakkam

# Premium Specifications

<b>Structure</b>	RCC Framed structure.
<b>Walls</b>	AAC Block.
<b>Main Doors</b>	Both side veneered Flush Door with polish finish
<b>Bedroom</b>	Skin doors with paint finish.
<b>Toilet Doors</b>	WPC doors with paint finish.
<b>Balcony Doors</b>	UPVC sliding doors.
<b>Tiles</b>	4'0" x 2'0" Vitrified Tiles for all rooms with skirting except toilets Antiskid Ceramic flooring tiles for all Toilets, Balcony. Ceramic Tiles for wall dado up to 8'0" height for all bathroom walls. Ceramic tile dado for Kitchen walls up to 2' height above Counter.
<b>Plumbing</b>	All concealed water lines with CPVC Pipes. Branded Ceramic Fittings: Wall mounted EWC & Wash Basin. Branded CP Fittings.
<b>Windows</b>	UPVC sliding window with wall mounted MS Grill.
<b>Kitchen</b>	Granite Counter SS Single bowl sink for Kitchen
<b>Painting</b>	Putty with Emulsion for Internal walls and Ceilings. Emulsion for external walls.
<b>Loft</b>	One Loft in Each Bedroom and Kitchen.



## Electrical Specifications

Three Phase Power Supply with Concealed wiring & Modular Switches of ISI Standard. Lights, fans, 5 amps and 15 amp's power points as tabulated below.

Location	Light point	Ceiling wall Fan Point	Plug Points 6A	Plug Points 16A	TV (6Amps)	Exhaust Chimney	Calling Bell	AC
Entrance	1 (2way)	-	-	-	-	-	1	-
Living	2	1+1 CH	1 (SB)	-	3	-	-	-
Dining	2	1	1 (SB)	-	-	-	-	1
Balcony	1	-	-	1 (WM)	-	-	-	-
Kitchen	1	1 (Ceiling)	2+1AG+ 1 Fridge	2	-	1	-	-
M. Bed Room	1+1 (2 Way)	1 (2 way)	3 (SB)	-	-	-	-	1
Other Bedrooms	1+1 (2 Way)	1 (2 way)	3 (SB)	-	-	-	-	1
Toilets	1+1 Mirror light	-	1 (SB)	1 (Geyser)	-	1	-	-
Common Toilet	1+1 Mirror light	-	-	1 (Geyser)	-	1	-	-

### Note

SB denotes Socket at Switch Board & CH - Chandelier | TV — Conduit provision will be provided in Living



Kolapakkam

# Premium Specifications

## Common (Blocks)

- Lift
- Corridor Flooring with Tiles
- Staircase with granite and SS handrail
- 1000W DG power backup
- Biometric Lock for main door

## Common Amenities

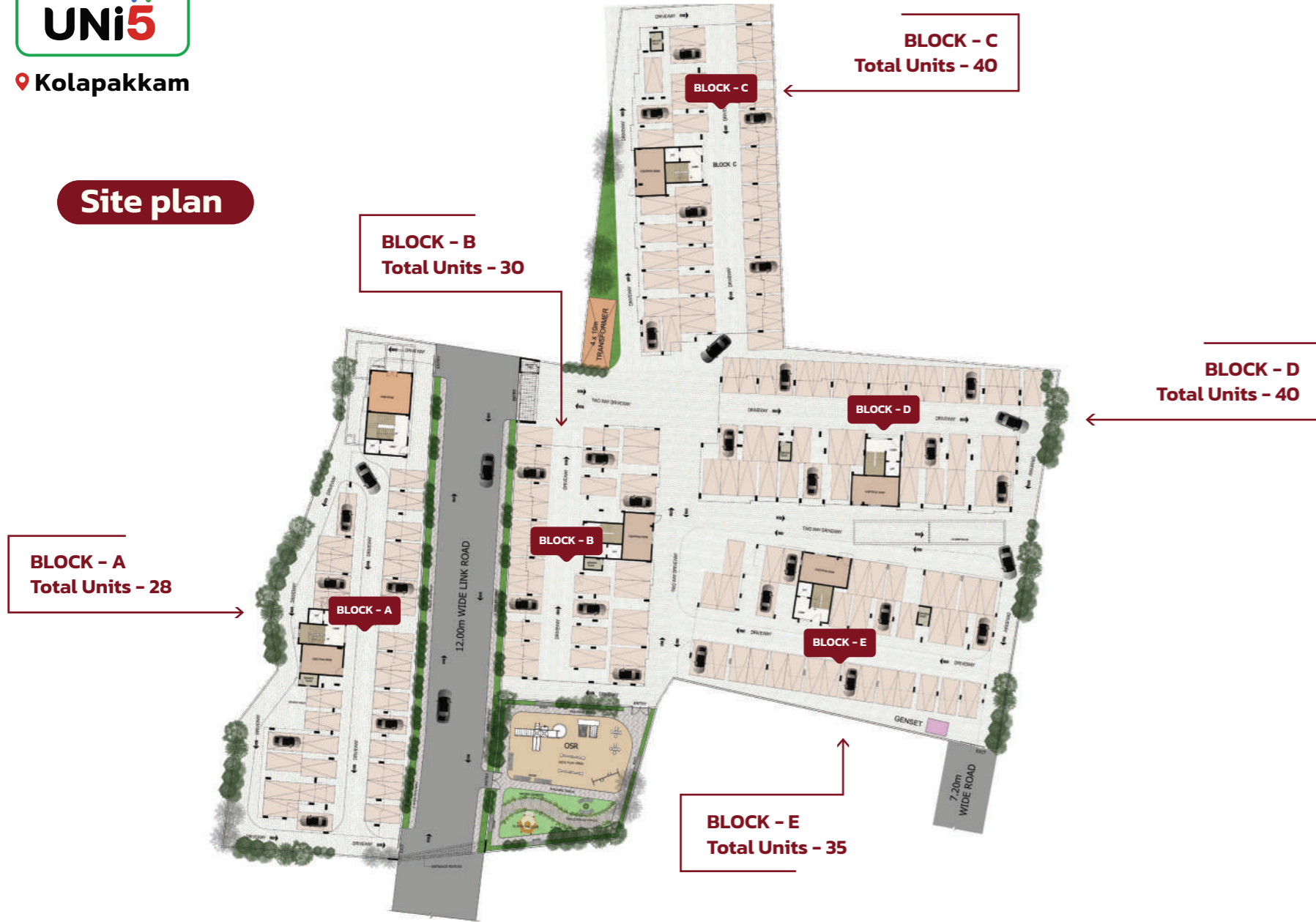
- Clubhouse
- Multipurpose Hall
- Gymnasium
- Table Tennis
- Carrom
- Chess Board
- Yoga / Meditation
- Children's Play Area
- Parents Sit Corner
- Jogging Track
- Accent Trees
- Security Cabin
- Grand Entry Arch
- Borewell Water
- Paver Block for Driveway
- Power Backup for Common Area
- Solar Power for Common Area
- CCTV
- Sewage Treatment Plant
- EV Charging Tray Provision with MCB at Meter Board (Without Switch & Wire)



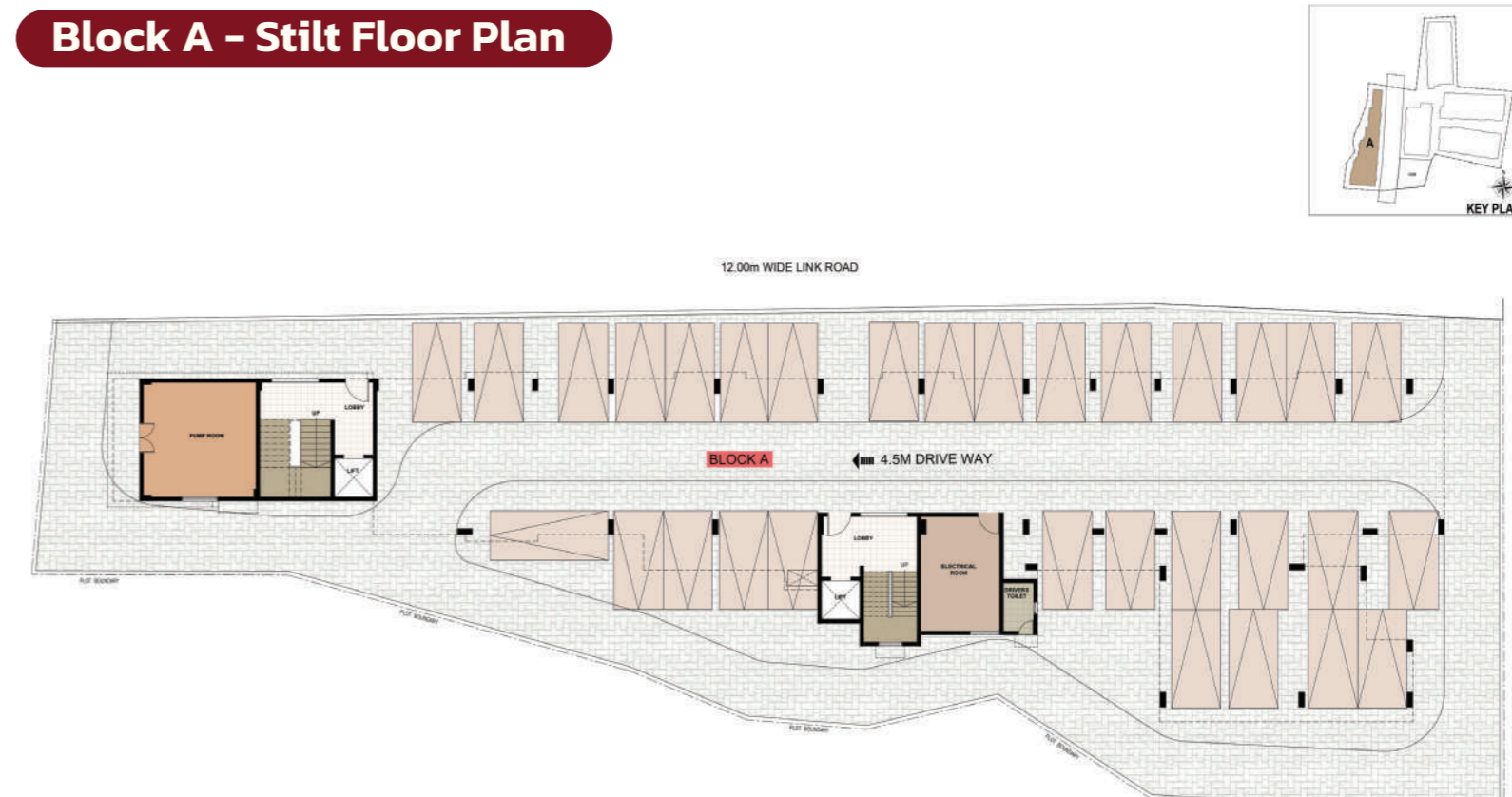


Kolapakkam

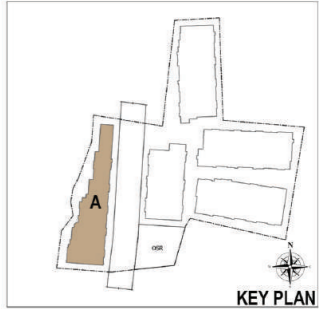
### Site plan



### Block A - Stilt Floor Plan



**Block A - 1st Floor Plan**

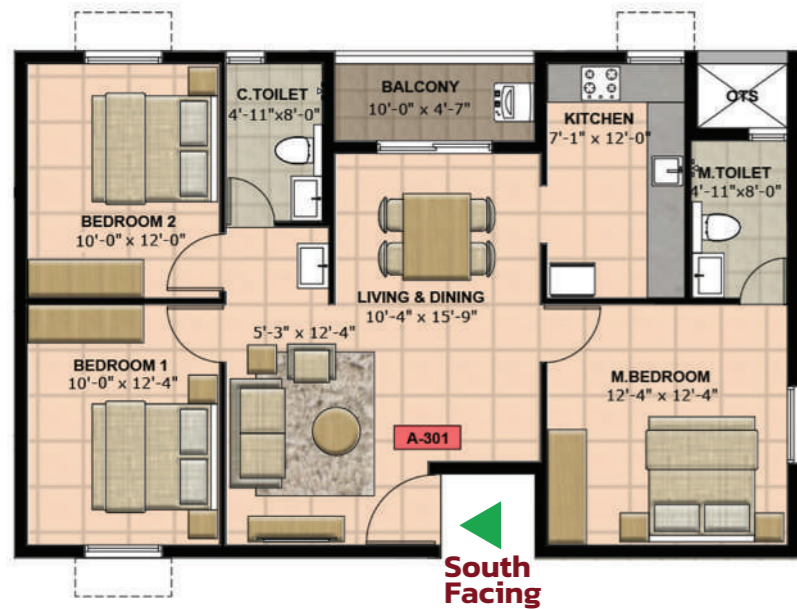


**Block A - 2nd Floor Plan**





### A301 - Unit Floor Plan



**3 BHK + 2T**

C.A: 864 Sq. Ft.  
S.A: 1228 Sq. Ft.



### A302 - Unit Floor Plan



**2 BHK + 2T**

C.A: 668 Sq. Ft.  
S.A: 967 Sq. Ft.



### A303 - Unit Floor Plan

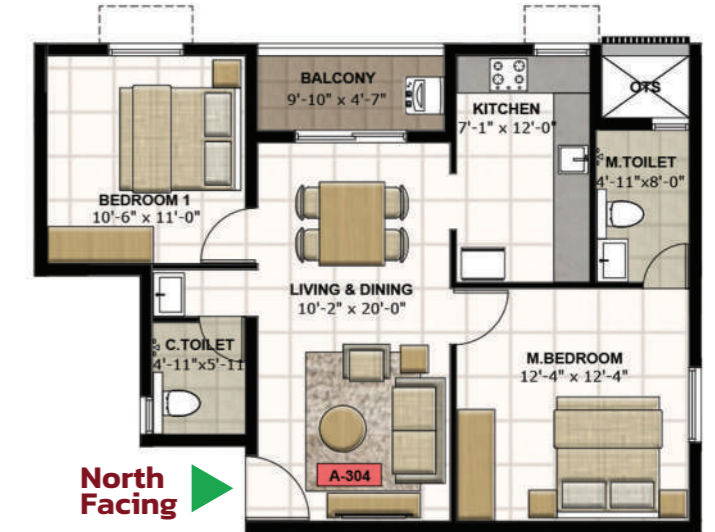


**2 BHK + 2T**

C.A: 668 Sq. Ft.  
S.A: 967 Sq. Ft.



### A304 - Unit Floor Plan

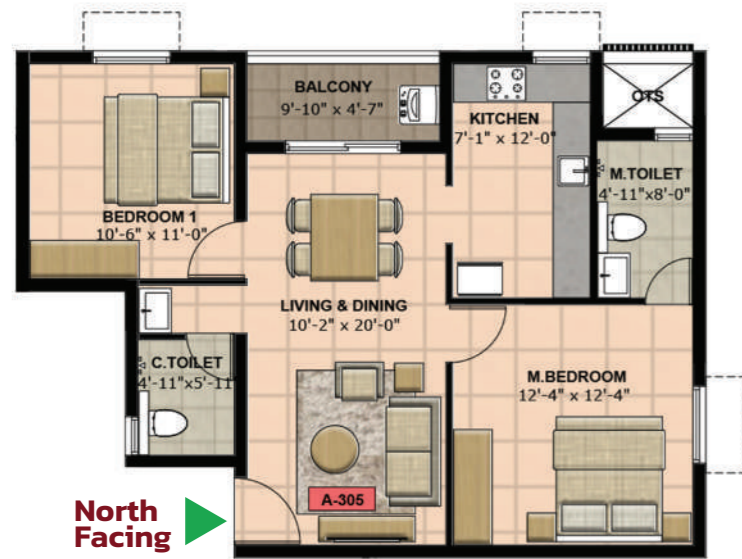


**2 BHK + 2T**

C.A: 668 Sq. Ft.  
S.A: 967 Sq. Ft.



### A305 - Unit Floor Plan



North Facing

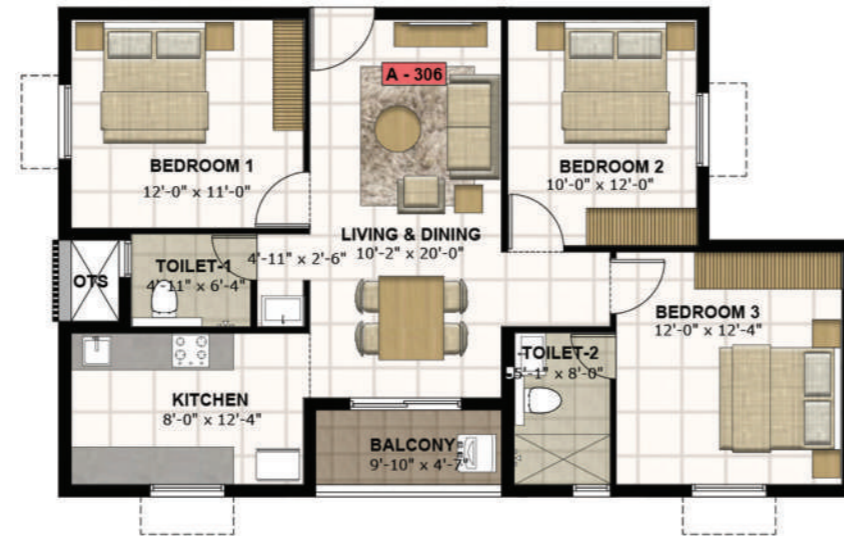
**2 BHK + 2T**

C.A: 668 Sq. Ft.  
S.A: 971 Sq. Ft.



### A306 - Unit Floor Plan

East Facing

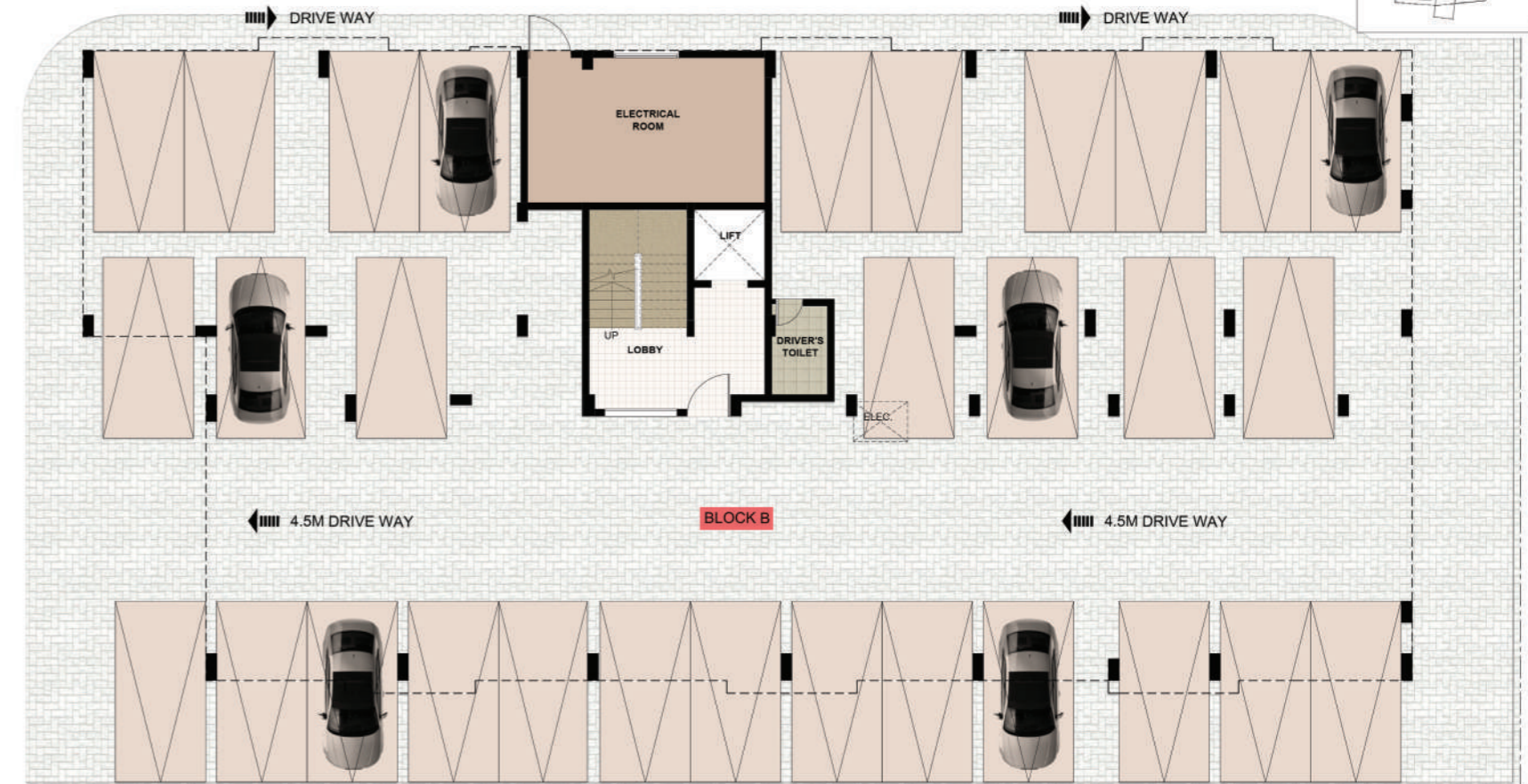


**3 BHK + 2T**

C.A: 847 Sq. Ft.  
S.A: 1211 Sq. Ft.



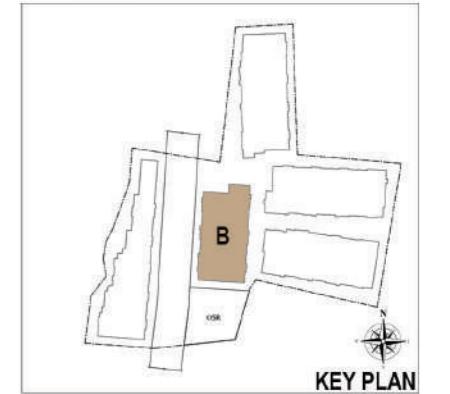
### Block B - Stilt Floor Plan



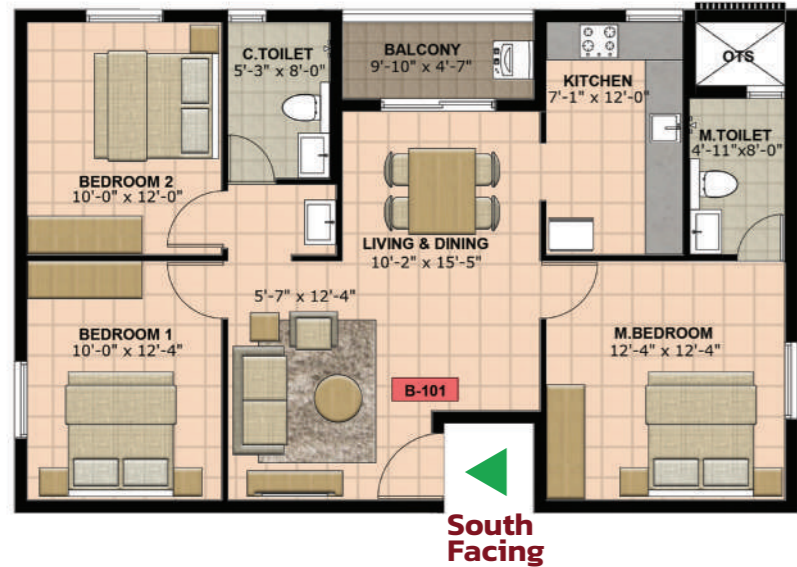


Kolapakkam

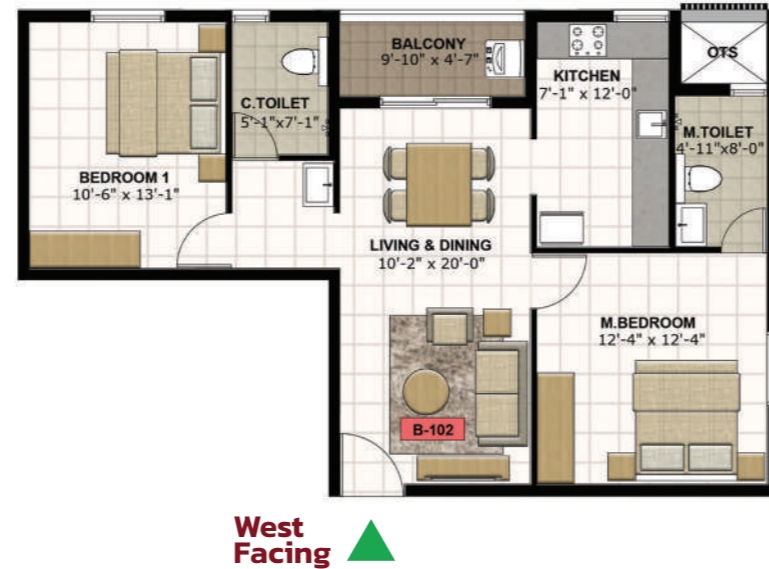
### Block B - Typical Floor Plan



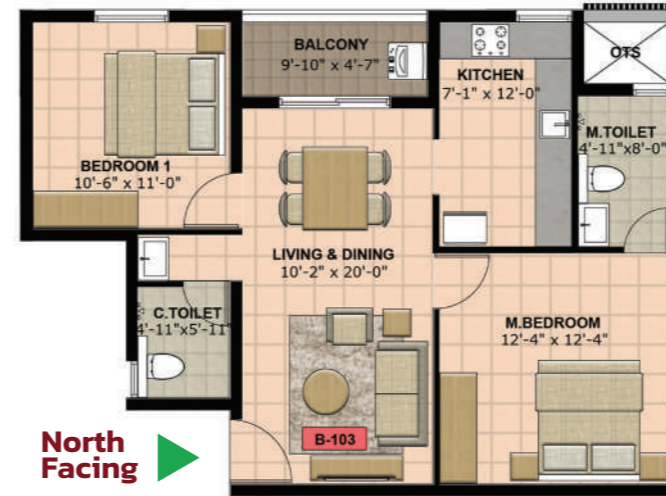
**B101 - Unit Floor Plan**



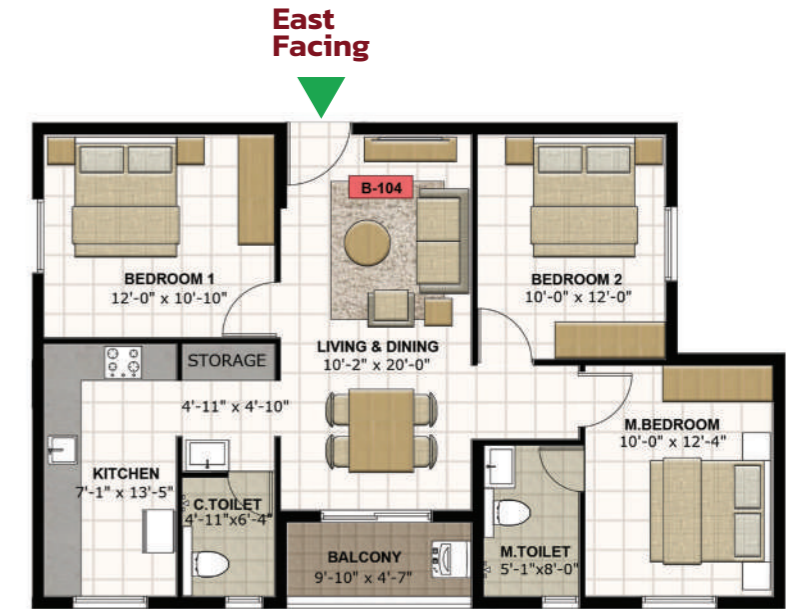
**B102 - Unit Floor Plan**



**B103 - Unit Floor Plan**



**B104 - Unit Floor Plan**



### B105 - Unit Floor Plan

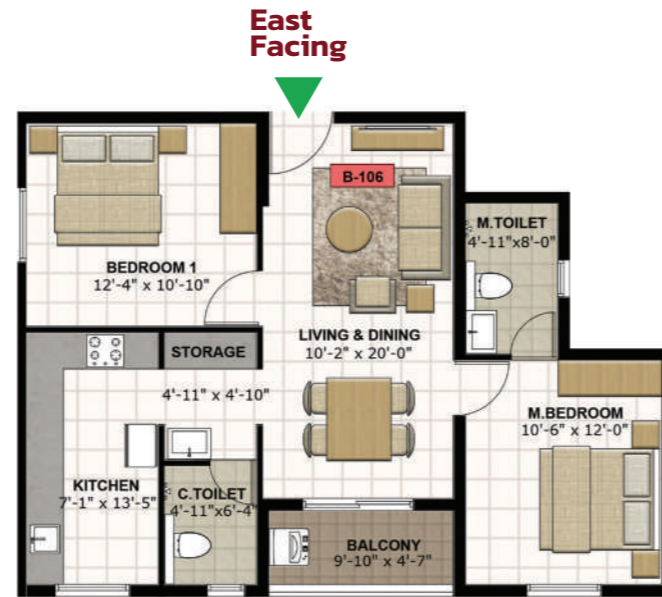


**2 BHK + 2T**

C.A: 696 Sq. Ft.  
S.A: 994 Sq. Ft.



### B106 - Unit Floor Plan

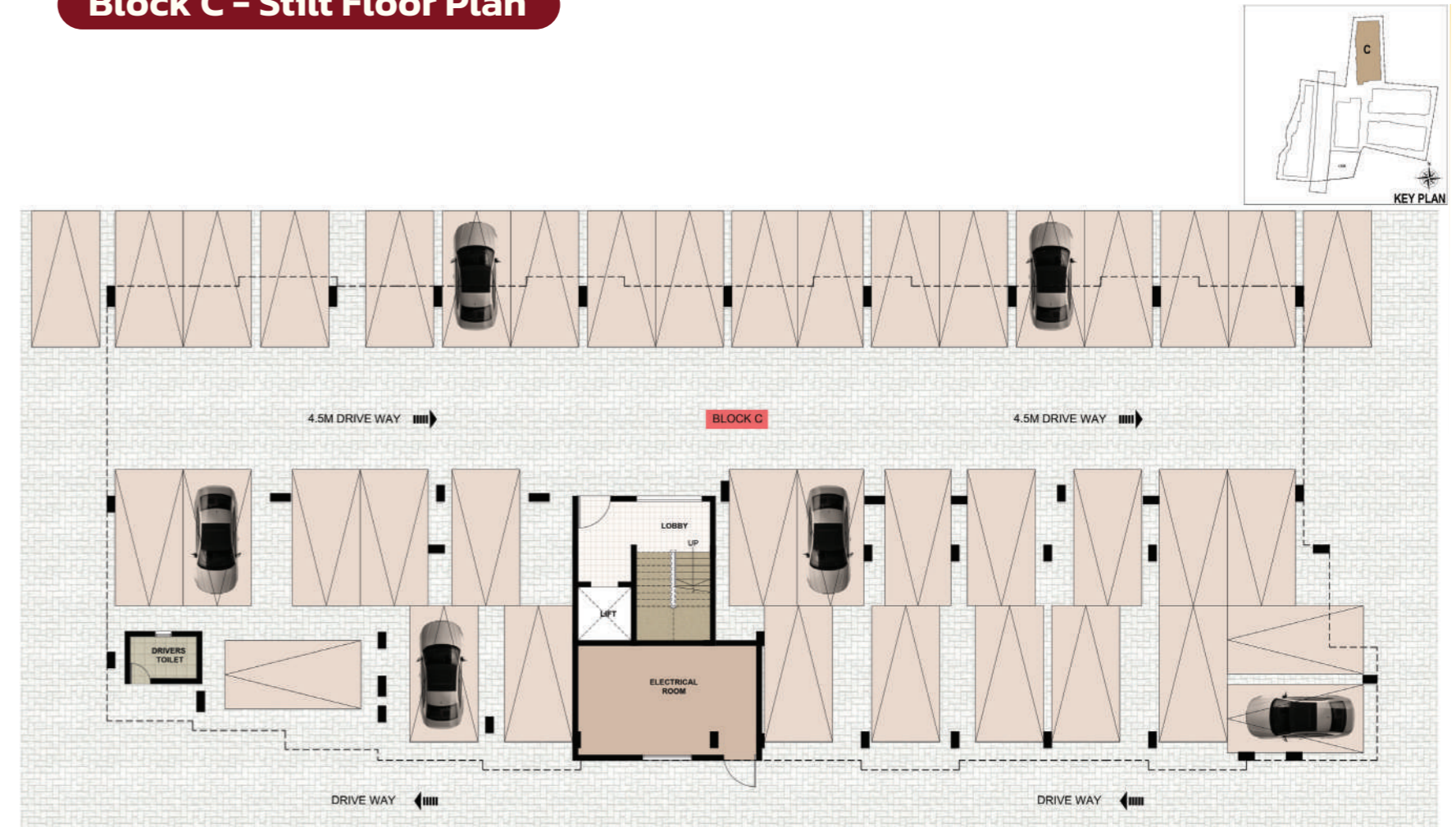


**2 BHK + 2T**

C.A: 696 Sq. Ft.  
S.A: 1003 Sq. Ft.



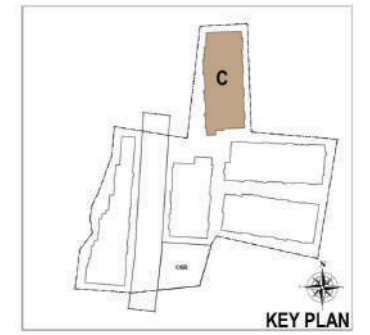
### Block C - Stilt Floor Plan



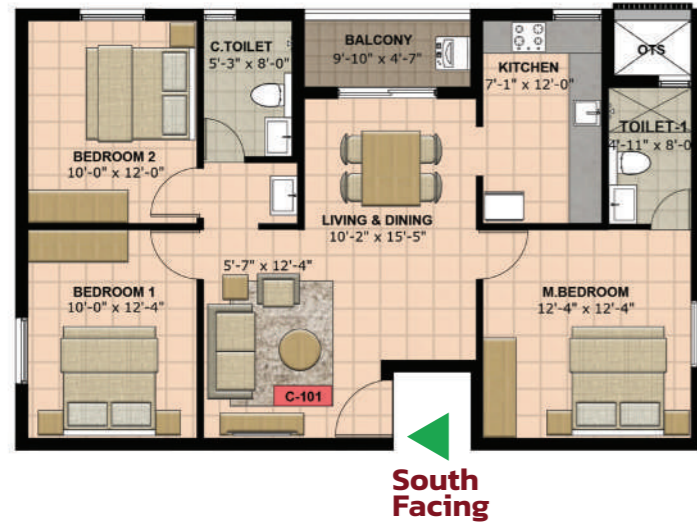


Kolapakkam

### Block C - Typical Floor Plan



**C101 - Unit Floor Plan**

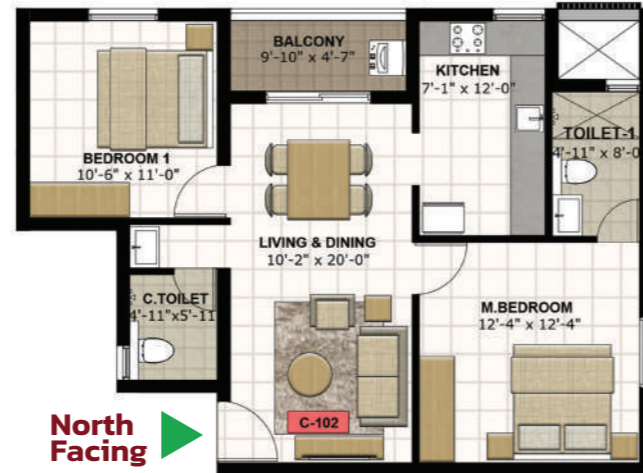


**3 BHK + 2T**

C.A: 868 Sq. Ft.  
S.A: 1223 Sq. Ft.



**C102 - Unit Floor Plan**

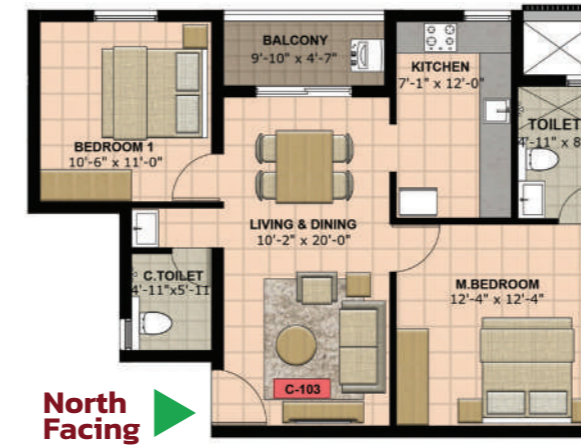


**2 BHK + 2T**

C.A: 668 Sq. Ft.  
S.A: 967 Sq. Ft.



**C103 - Unit Floor Plan**

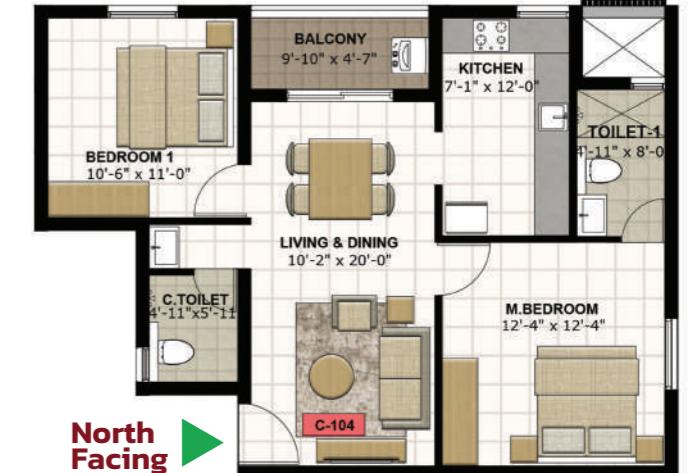


**2 BHK + 2T**

C.A: 668 Sq. Ft.  
S.A: 967 Sq. Ft.



**C104 - Unit Floor Plan**



**2 BHK + 2T**

C.A: 668 Sq. Ft.  
S.A: 974 Sq. Ft.



**C105 - Unit Floor Plan**

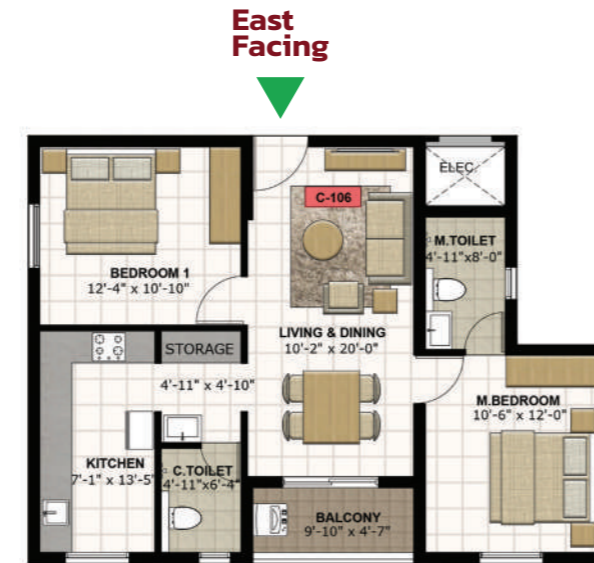


**3 BHK + 2T**

C.A: 841 Sq. Ft.  
S.A: 1190 Sq. Ft.



**C106 - Unit Floor Plan**



**2 BHK + 2T**

C.A: 696 Sq. Ft.  
S.A: 999 Sq. Ft.



**C107 - Unit Floor Plan**

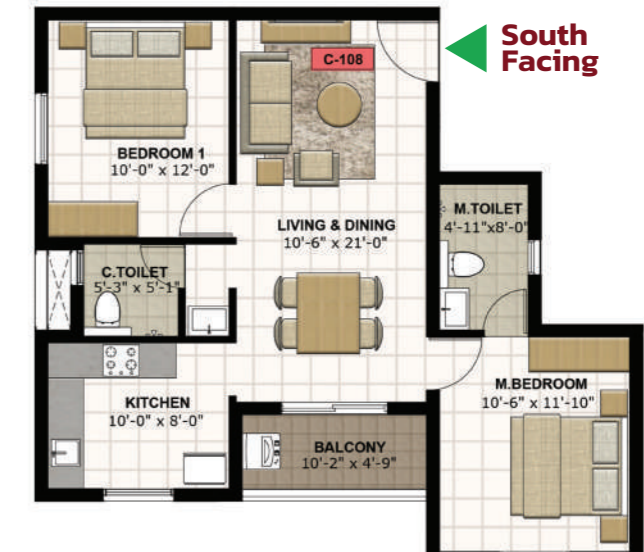


**2 BHK + 2T**

C.A: 733 Sq. Ft.  
S.A: 1048 Sq. Ft.



**C108 - Unit Floor Plan**



**2 BHK + 2T**

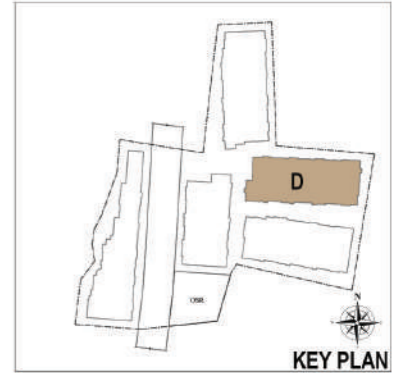
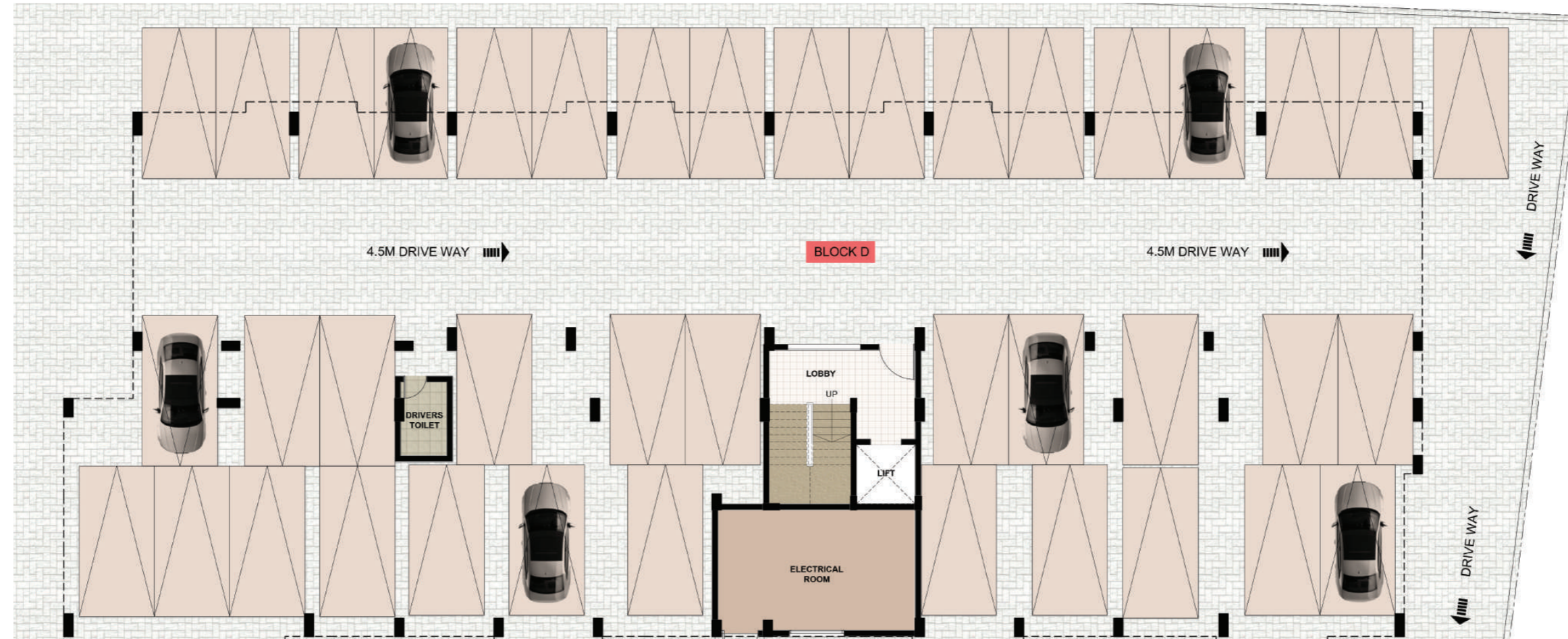
C.A: 653 Sq. Ft.  
S.A: 953 Sq. Ft.





Kolapakkam

### Block D Stilt Floor Plan



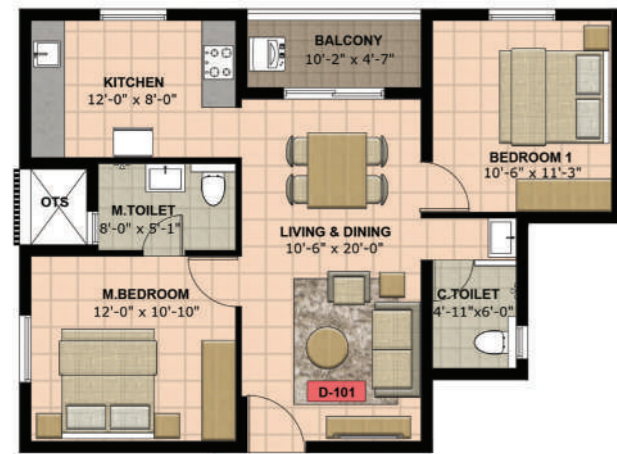


Kolapakkam

### Block D Typical Floor Plan



**D101 - Unit Floor Plan**



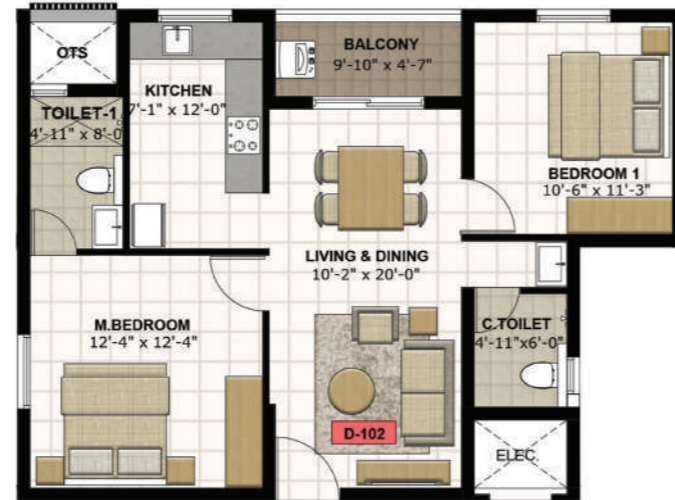
▲ South Facing

**2 BHK + 2T**

C.A: 668 Sq. Ft.  
S.A: 978 Sq. Ft.



**D102 - Unit Floor Plan**



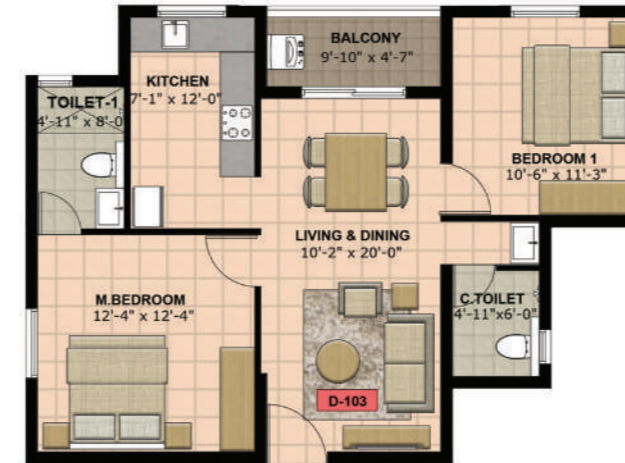
▲ South Facing

**2 BHK + 2T**

C.A: 671 Sq. Ft.  
S.A: 967 Sq. Ft.



**D103 - Unit Floor Plan**



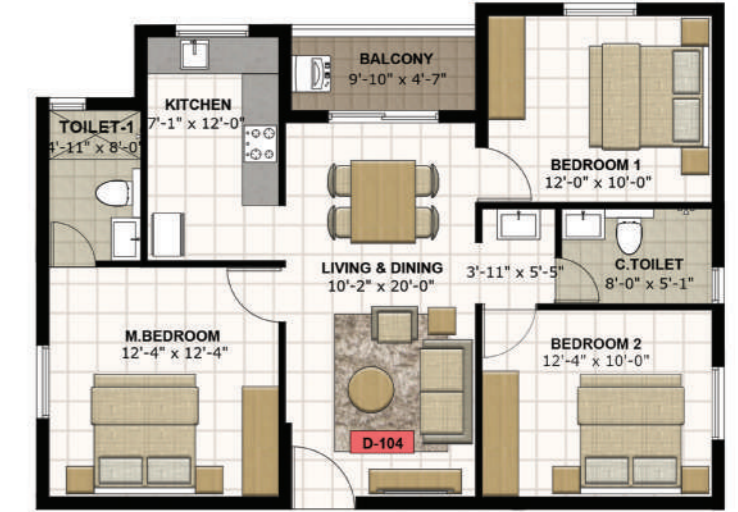
▲ South Facing

**2 BHK + 2T**

C.A: 671 Sq. Ft.  
S.A: 971 Sq. Ft.



**D104 - Unit Floor Plan**



▲ South Facing

**3 BHK + 2T**

C.A: 821 Sq. Ft.  
S.A: 1157 Sq. Ft.



**D105 - Unit Floor Plan**



**2 BHK + 2T**  
 C.A: 670 Sq. Ft.  
 S.A: 977 Sq. Ft.



**D106 - Unit Floor Plan**



**2 BHK + 2T**  
 C.A: 681 Sq. Ft.  
 S.A: 989 Sq. Ft.



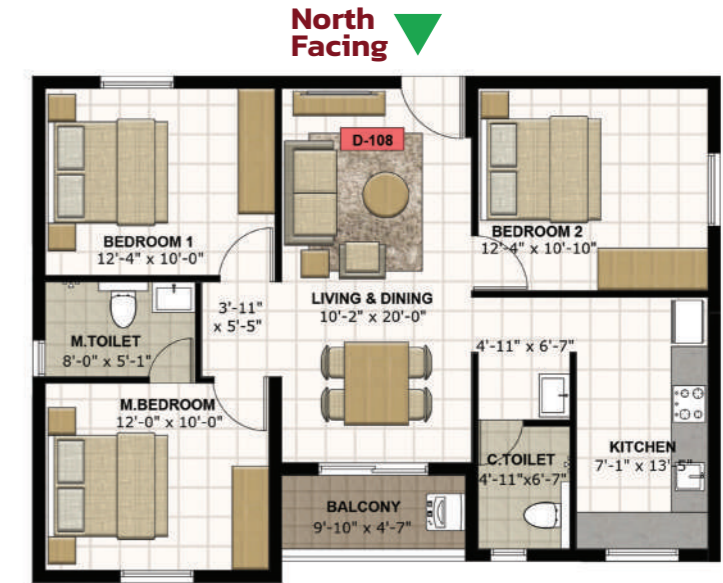
**D107 - Unit Floor Plan**



**2 BHK + 2T**  
 C.A: 696 Sq. Ft.  
 S.A: 1003 Sq. Ft.



**D108 - Unit Floor Plan**



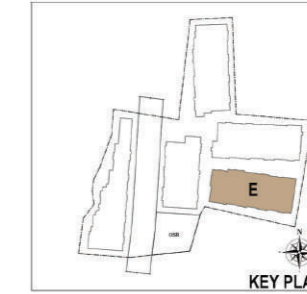
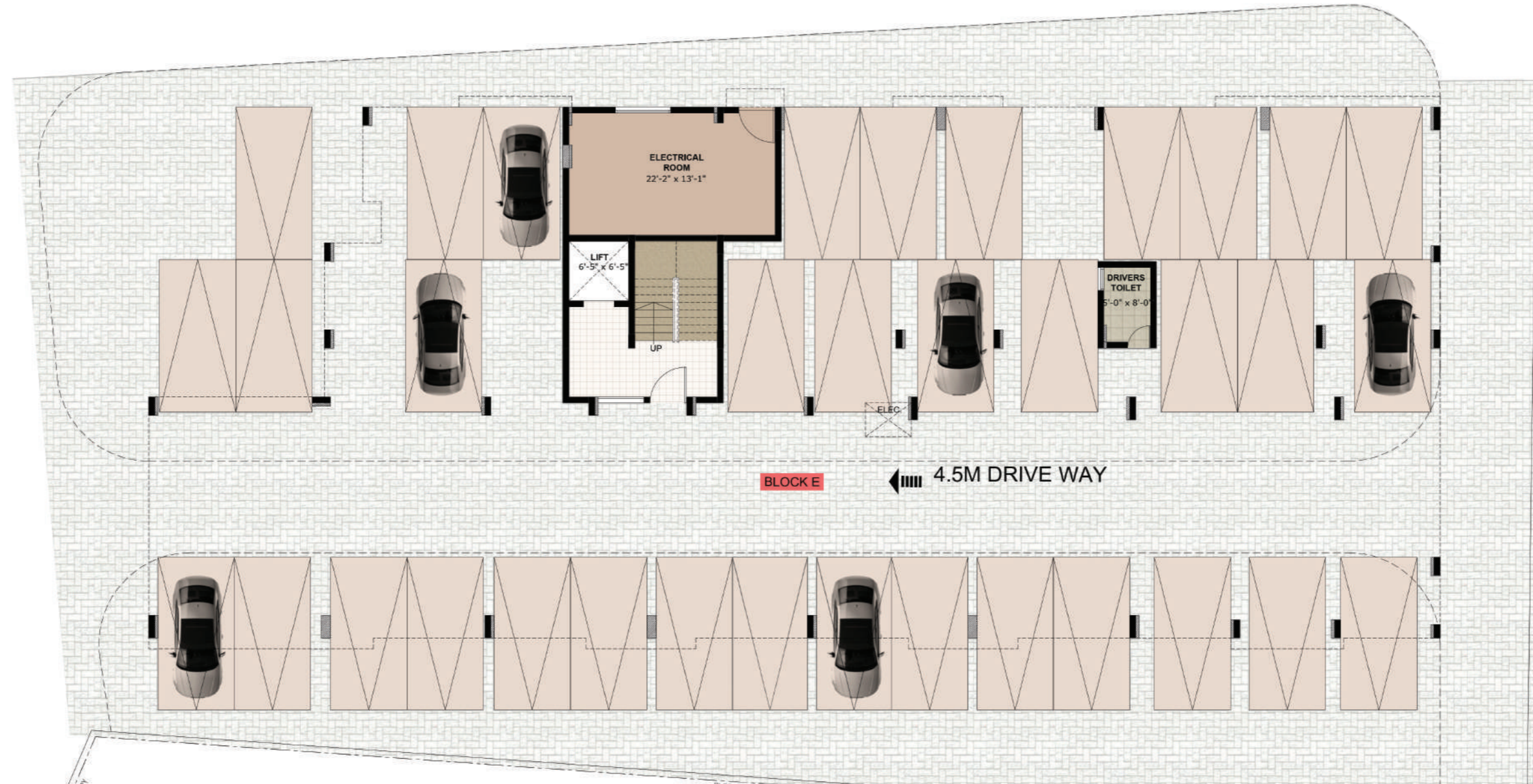
**3 BHK + 2T**  
 C.A: 841 Sq. Ft.  
 S.A: 1185 Sq. Ft.





Kolapakkam

### Block E Stilt Floor Plan





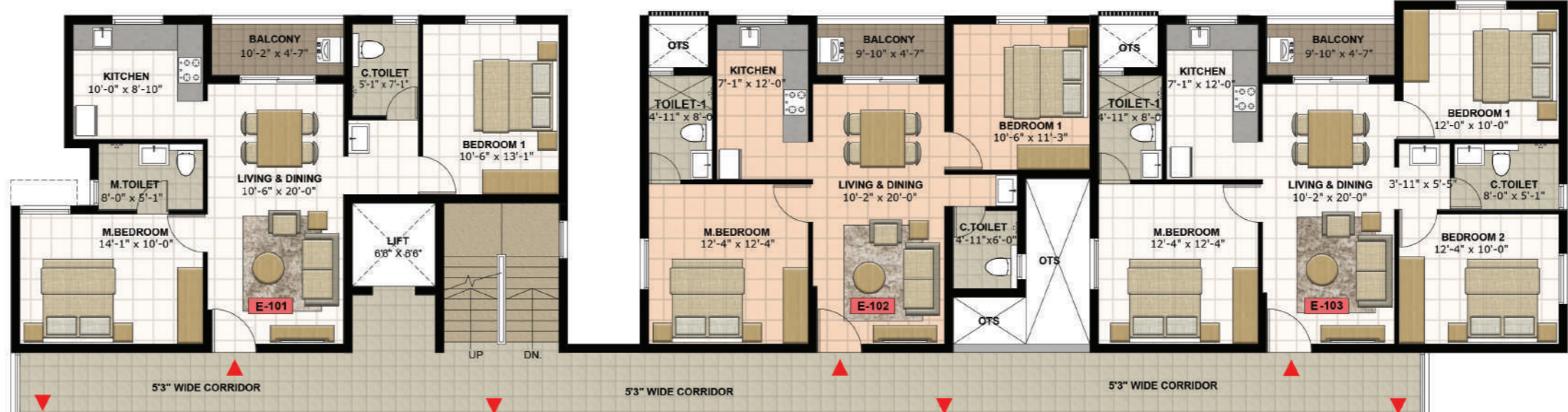
Kolapakkam

# Block E Typical Floor Plan

**E 101/201/301/401/501 - 2 B + 2T**  
C.A: 713 Sq. Ft. | S.A: 1037 Sq. Ft.

**E 102/202/302/402/502 - 2 B + 2T**  
C.A: 671 Sq. Ft. | S.A: 978 Sq. Ft.

**E 103/203/303/403/503 - 3 B + 2T**  
C.A: 820 Sq. Ft. | S.A: 1161 Sq. Ft.

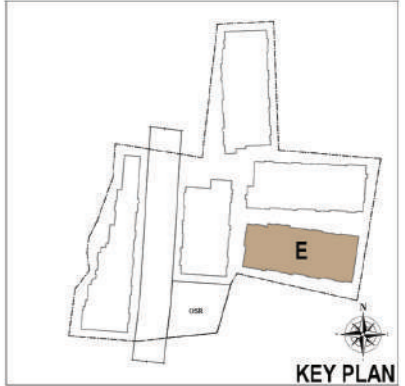
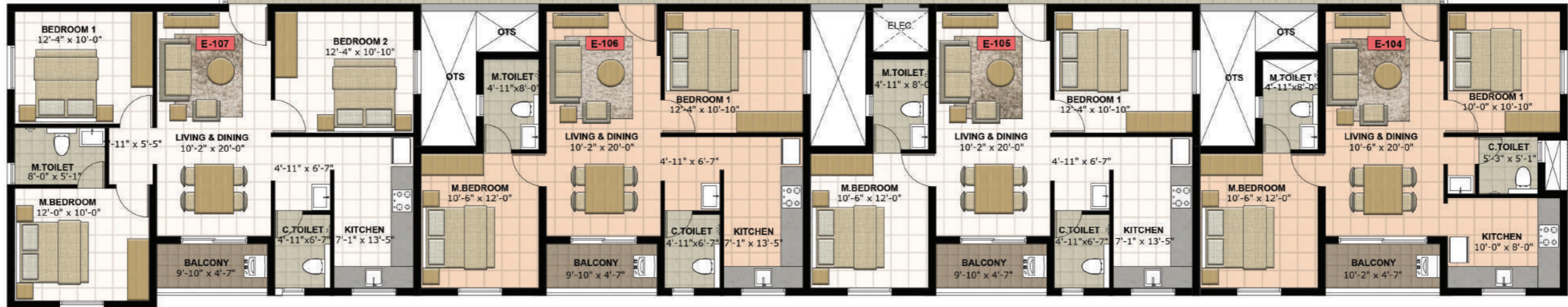


**E 107/207/307/407/507 - 3 B + 2T**  
C.A: 841 Sq. Ft. | S.A: 1185 Sq. Ft.

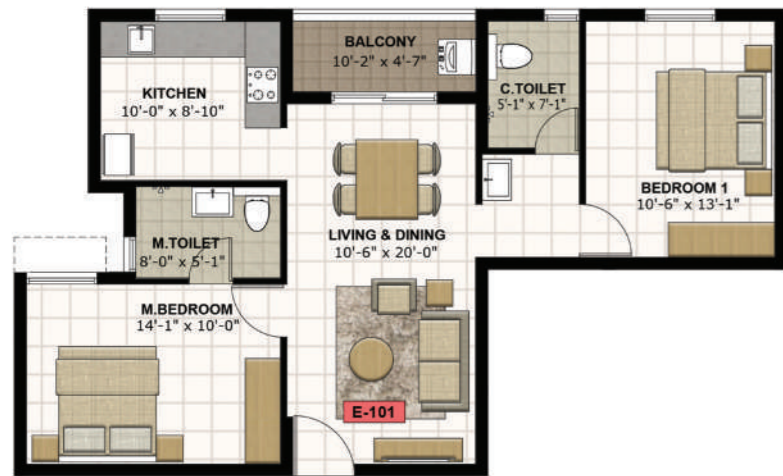
**E 106/206/306/406/506 - 2 B + 2T**  
C.A: 696 Sq. Ft. | S.A: 998 Sq. Ft.

**E 105/205/305/405/505 - 2 B + 2T**  
C.A: 696 Sq. Ft. | S.A: 994 Sq. Ft.

**E 104/204/304/404/504 - 2 B + 2T**  
C.A: 636 Sq. Ft. | S.A: 930 Sq. Ft.



### E101 - Unit Floor Plan



▲ South Facing

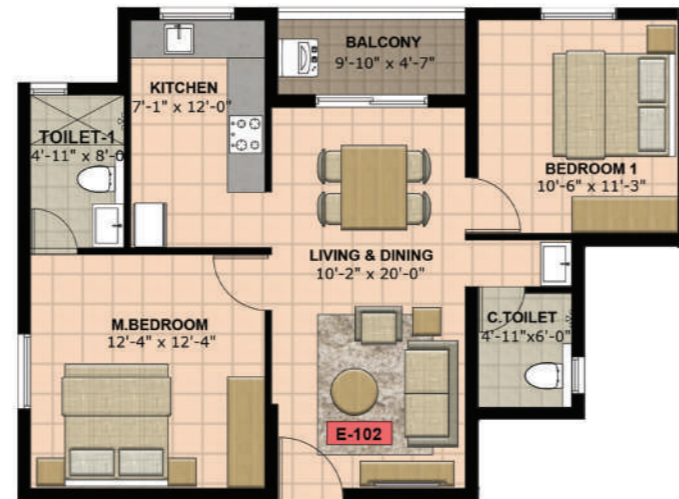
**2 BHK + 2T**

C.A: 713 Sq. Ft.  
S.A: 1037 Sq. Ft.

N



### E102 - Unit Floor Plan



▲ South Facing

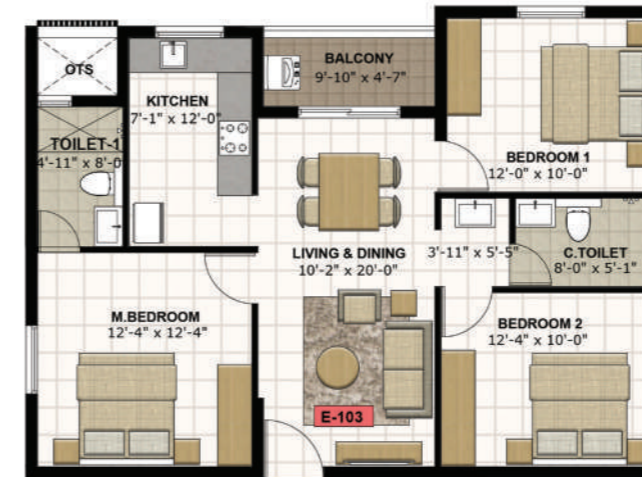
**2 BHK + 2T**

C.A: 671 Sq. Ft.  
S.A: 978 Sq. Ft.

N



### E103 - Unit Floor Plan



▲ South Facing

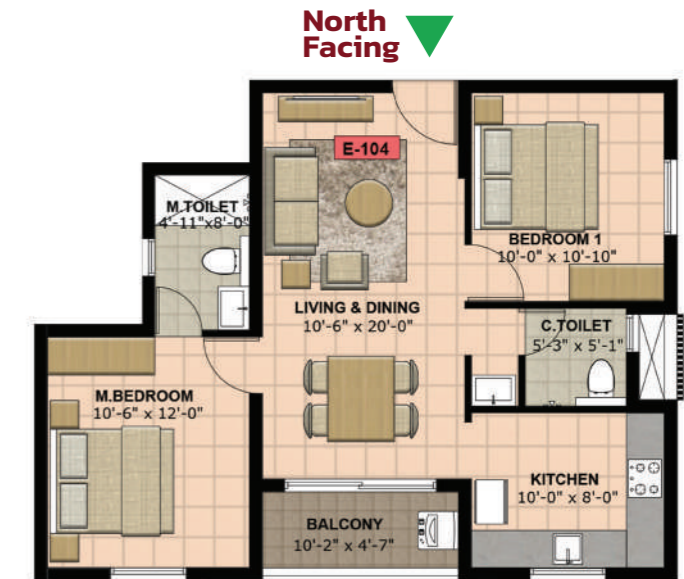
**3 BHK + 2T**

C.A: 820 Sq. Ft.  
S.A: 1161 Sq. Ft.

N



### E104 - Unit Floor Plan



▼ North Facing

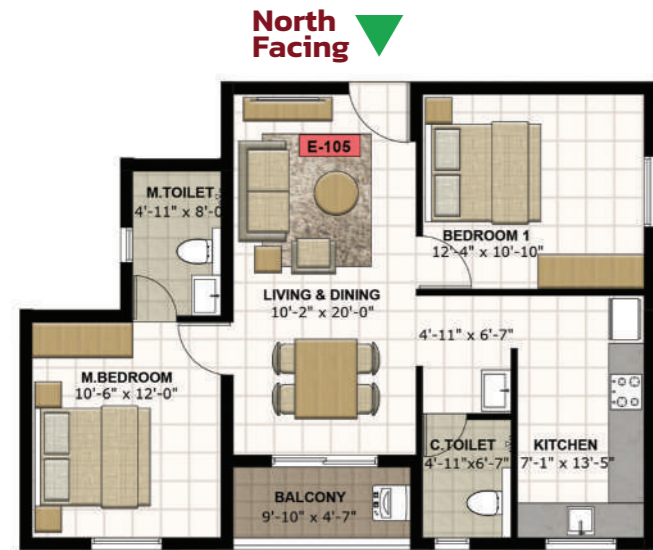
**2 BHK + 2T**

C.A: 636 Sq. Ft.  
S.A: 930 Sq. Ft.

N



**E105 - Unit Floor Plan**



**2 BHK + 2T**  
 C.A: 696 Sq. Ft.  
 S.A: 994 Sq. Ft.



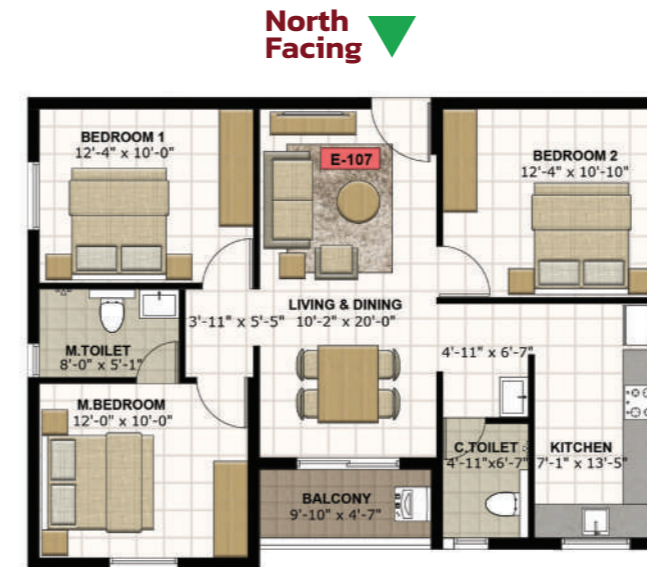
**E106 - Unit Floor Plan**



**2 BHK + 2T**  
 C.A: 696 Sq. Ft.  
 S.A: 998 Sq. Ft.



**E107 - Unit Floor Plan**



**3 BHK + 2T**  
 C.A: 841 Sq. Ft.  
 S.A: 1185 Sq. Ft.





📍 Kolapakkam



SCAN FOR  
LOCATION

TNRERA/35/BLG/0018/2026 dated 14.01.2026 | [www.rera.tn.gov.in](http://www.rera.tn.gov.in)

**Site Address:** Isha UNI5, S.Nos. 46/1E, 46/2B & 57/6, TVS Emerald Green Acres Layout Road, Kolapakkam, Chennai, Tamil Nadu – 600127.

**Office Address:** Isha Homes (India) Private Limited,  
74, 1st Ave, Indira Nagar, Adyar, Chennai, Tamil Nadu – 600020.

☎ +91 7358 104 104

🌐 [www.ishahomes.com](http://www.ishahomes.com)

**Disclaimer:** For illustrative and marketing purposes only. While the information provided is believed to be accurate and reliable at the time of printing, only the information contained in the final Sales and Purchase Agreement will have any legal effect.